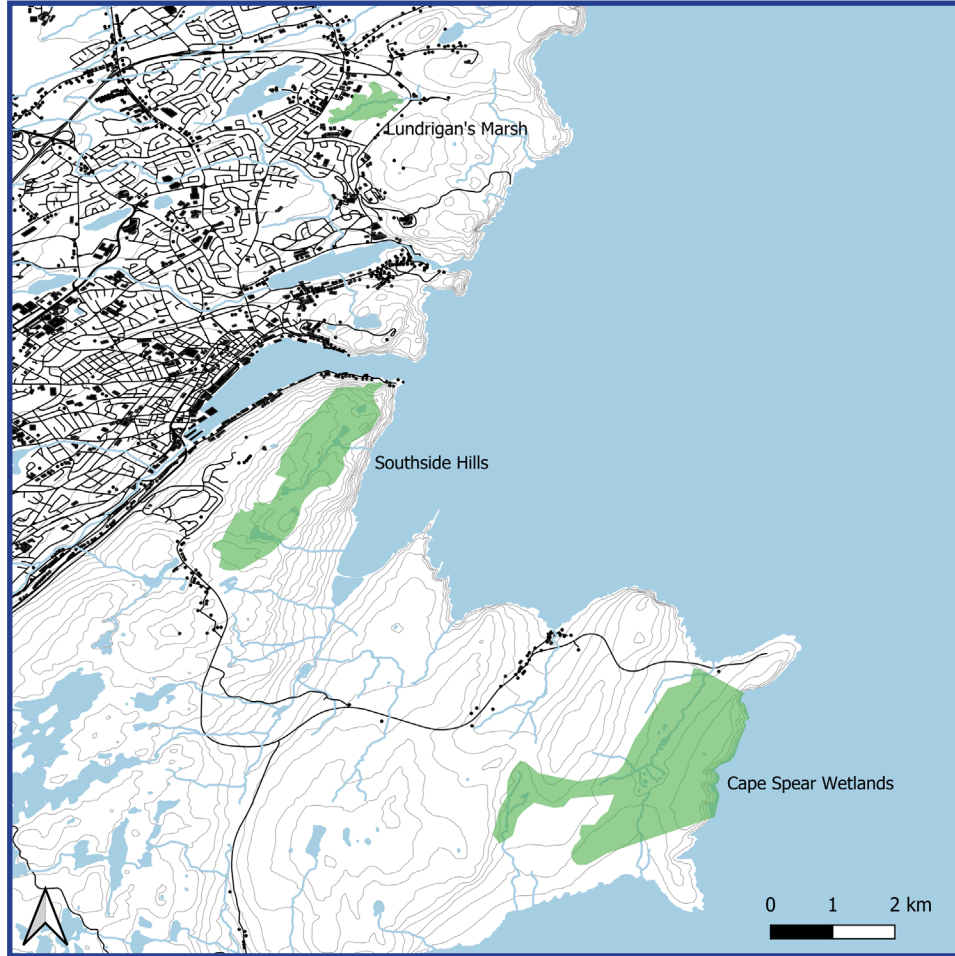


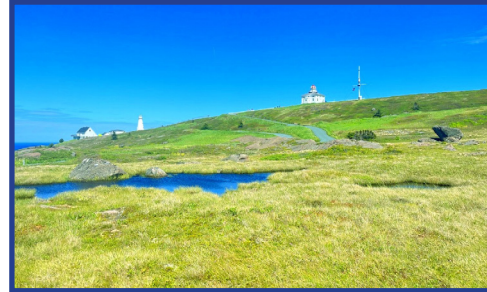
# St. John's Municipal Habitat Stewardship Agreement

The City of St. John's and the Government of Newfoundland and Labrador signed a **MUNICIPAL HABITAT STEWARDSHIP AGREEMENT** in 2004, and signed an expansion to that Agreement in 2025, conserving a total of 1456 acres of land.



The agreement designates three Conservation Areas: Lundrigan's Marsh, Southside Hills, and Cape Spear Wetlands. Lundrigan's Marsh is popular among birdwatchers for its occurrence of rare bird species, and it is the largest cattail marsh in eastern Newfoundland. Southside Hills is a beautiful and relatively large intact wetland complex just south of Downtown St. John's, encompassing a portion of the East Coast Trail. Cape Spear Wetlands have a myriad of flora and fauna species and provides habitat for critically imperiled, imperiled, or vulnerable species.

## Cape Spear



## Southside Hills



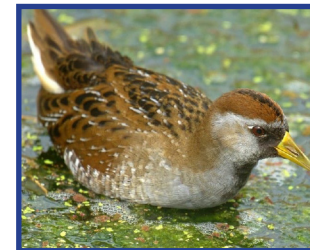
## Lundrigan's Marsh



## What to look & listen for:



**Red Knot**  
*Calidris canutus*  
(Cape Spear)



**Sora**  
*Porzana carolina*  
(Lundrigan's Marsh)



**Bald Eagle**  
*Haliaeetus leucocephalus*  
(Southside Hills)

ST. JOHN'S



**EHJV**  
Eastern Habitat Joint Venture

