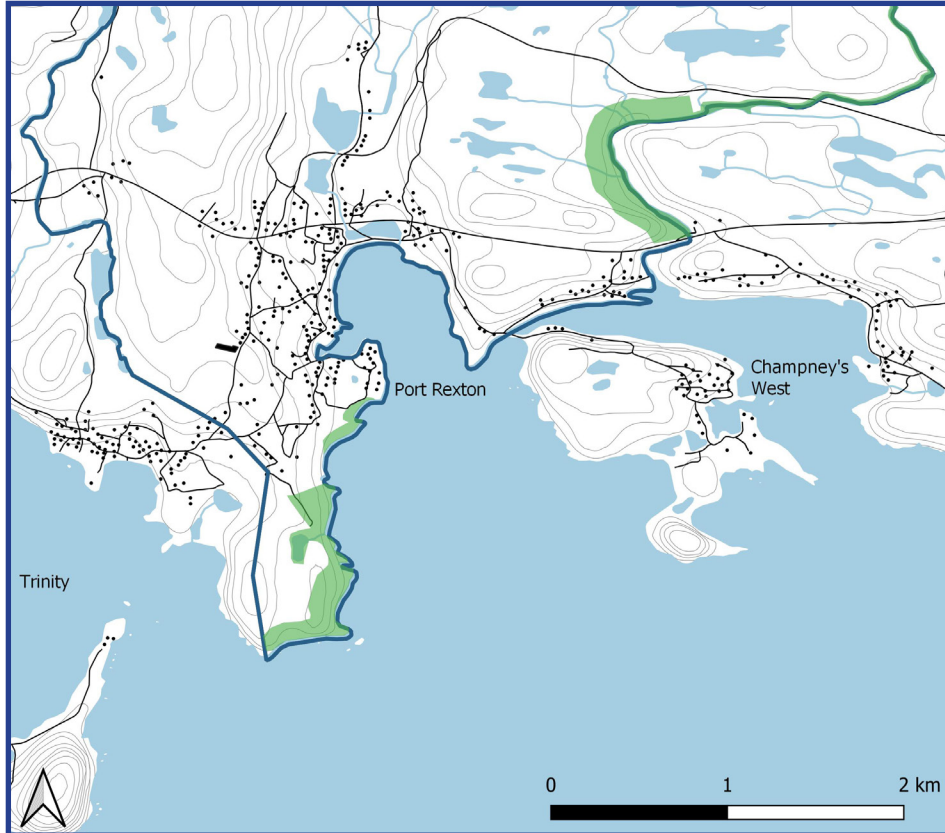


Port Rexton Municipal Habitat Stewardship Agreement

The Town of Port Rexton and the Government of Newfoundland and Labrador signed a **MUNICIPAL HABITAT STEWARDSHIP AGREEMENT** in April 2025, committing to the conservation and enhancement of wildlife habitat within the town's planning boundaries.



The agreement designates two Conservation Areas (totaling 200 acres): the Skerwink Trail Conservation Area - which buffers the coastal headlands of the Skerwink Peninsula and includes most of the internationally recognized Skerwink Hiking Trail, and the Salmon Cove River Conservation Area - which includes the scheduled salmon river on the eastern municipal boundary to maintain an intact riparian buffer around the river helping to sustain the health of the river. These areas contain significant habitat for wildlife including waterfowl, shorebirds, songbirds, mammals, and salmon.

What to look and listen for:



Black guillemot
(*Cephus grylle*)



Double-crested cormorant
(*Nannopterum auritum*)



Boreal Chickadee
(*Poecile hudsonicus*)

